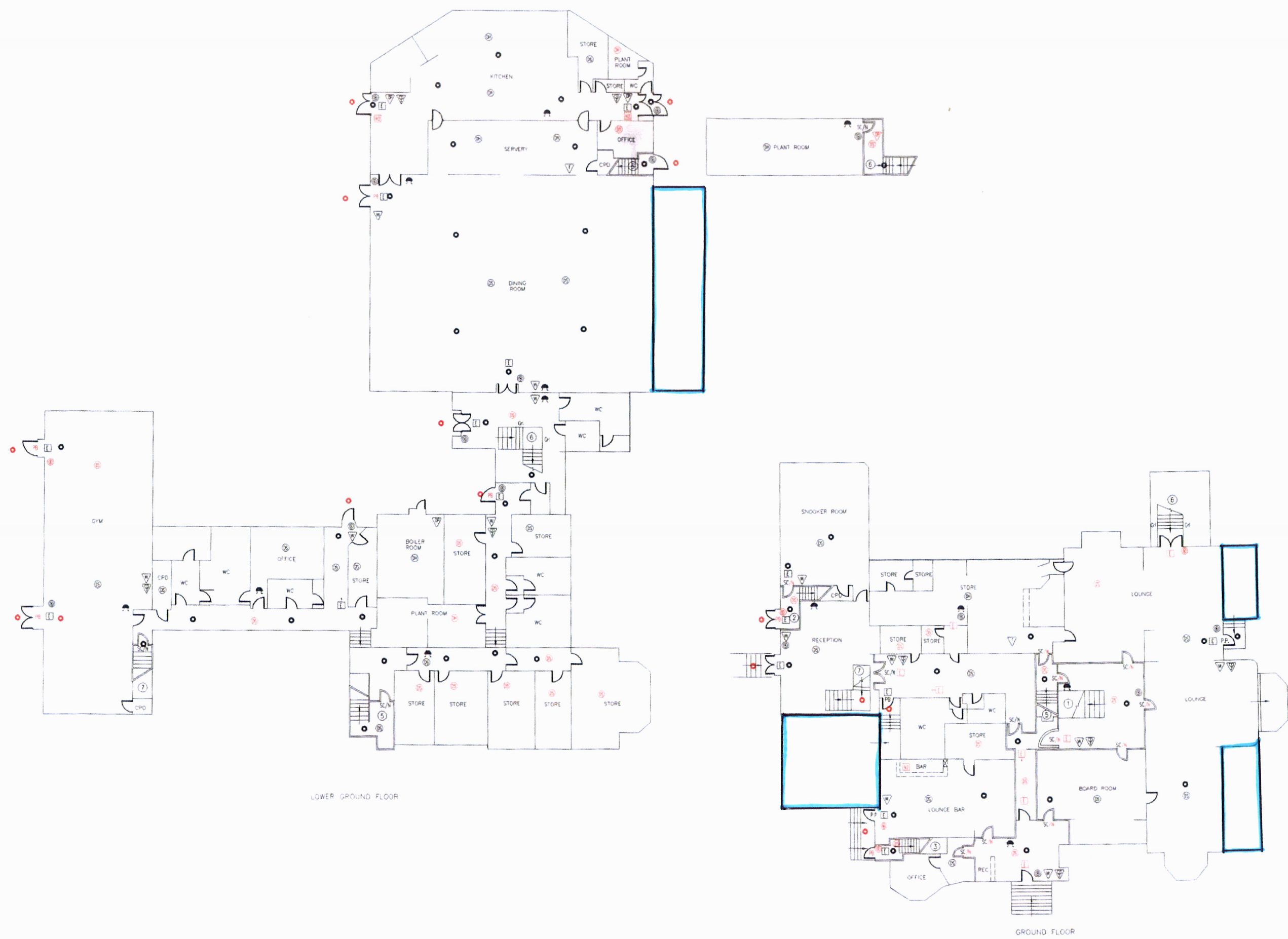


□ - EXTERNAL DRINKING AREA



- P.P. Push PAD TO OPEN
- GII GUARDRAIL
- GRAPHIC/PICTORIAL EXIT SIGN WITH DIRECTION ARROW 75mm
- SC SELF CLOSING DOOR
- FIRE ALARM SOUNDER
- EMERGENCY LIGHTING POINT
- FIRE ALARM CALL POINT
- HEAT DETECTOR
- SMOKE DETECTOR
- PB PUSH BAR TO OPEN (50 mm)
- GRAPHIC/PICTORIAL EXIT SIGN 75mm
- DRY POWDER EXTINGUISHER (2.3 Kg)
- FOAM EXTINGUISHER (6 Litres)
- CARBON DIOXIDE EXTINGUISHER (2.3 Kg)
- STAFF FIRE ACTION NOTICE
- WATER EXTINGUISHER (8 Litres)
- SELF CLOSING DOOR WITH FIRE DOOR KEEP SHUT NOTICE 5mm
- 60mins MIN FIRE RESISTING CONSTRUCTION
- 30mins MIN FIRE RESISTING DOORS

LOWER GROUND FLOOR

GROUND FLOOR

STRATHCLYDE FIRE BRIGADE

THIS PLAN FORMS PART OF CERTIFICATE No.

DATE OF ISSUE

DRAWING No. *Delux01*

APPROXIMATE SCALE 1:150

NAME AND ADDRESS OF PREMISES

ADAMTON HOUSE HOTEL
MONKTON
KAB 25Q

SHEET 1 OF 2